



Models - **8685-2G, 8685-2GVR, 8685-2GW, 8685-2GWVR, 8685-2GVR-1, 8685-2GWVR-1, 8685-2FG, 8685-2FGW**

Page 2	Product Information
Page 3	Specifications
Page 4	Important Safety Instructions
Page 5	Product Dimensions
Page 6-10	Installation
Page 11	Timer Set-Up
Page 12	Operating Instructions & Maintenance
Page 12-13	Troubleshooting
Page 14-24	Parts List
Page 25	Wiring Diagram

PRODUCT INFORMATION

Please take a moment to fill out the information below in order to aid us with any future sales or service inquiries. Model number and serial number information can be found on the serial tag located inside the control box and/or on the lower exterior of the can. Key number can be found on the tag that comes attached to the keys. There may be more than one key number depending on unit.

Please keep this information with your records.

MODEL#: _____

SERIAL#: _____

KEY NUMBER(S): _____

DATE PURCHASED: _____

DISTRIBUTOR: _____

**J.E. Adams Industries
1025 63rd Ave. S.W.
Cedar Rapids, IA 52404
1-800-553-8861
www.jeadams.com**

Specifications

Unit specifications: 8685-2G, 8685-2GVR, 8685-2GW, 8685-2GWVR, 8685-2GWVR-1 & 8685-2GVR-1, 8685-2FG, 8685-2FGW

Voltage: 120vac, 60hz

Amperage: (1) 10 amp service is required

Compressor: $\frac{3}{4}$ hp, twin cylinder models

Water Solenoid: 120vac, 60hz

Timer: SSAC

Weight: 57 lbs, no packaging

DUTY CYCLE: 3.2 minutes on, 3.2 minutes off.

NOTE: "UNIT INTENDED FOR COMMERCIAL USE ONLY"

IMPORTANT SAFETY INSTRUCTIONS

When using an electrical appliance, basic precautions should always be followed, including the following:

READ ALL INSTRUCTIONS BEFORE USING (THIS APPLIANCE)

WARNING – To reduce the risk of fire, electric shock, or injury:

- Use only as described in manual. Use only manufactures recommended attachments.
- Do not allow to be used as a toy. Close attention is necessary when used by or near children.
- Do not put any object into openings. Do not use with any opening blocked; keep free of dirt and anything that may reduce flow.
- Keep hair, loose clothing, fingers, and all parts of body away from openings and moving parts.
- Do not use near flammable or combustible liquids, such as gasoline, or use in areas where they may be present.
- Do not use near anything that is burning or smoking, such as cigarettes, matches, or hot ashes.
- Products such as "Fix-A-Flat" are highly combustible and cannot be used in conjunction with air machine!

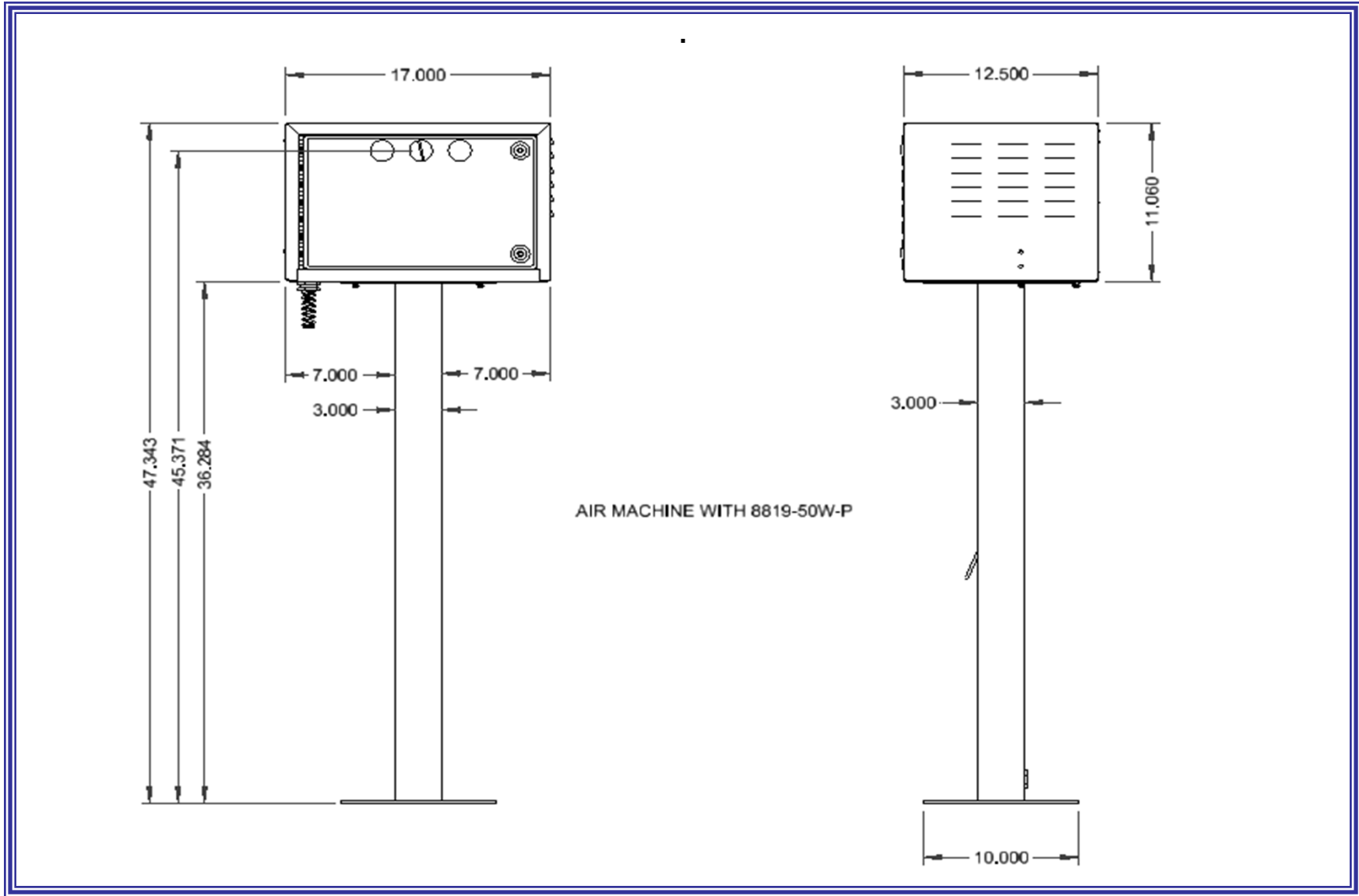


SAVE THESE INSTRUCTIONS

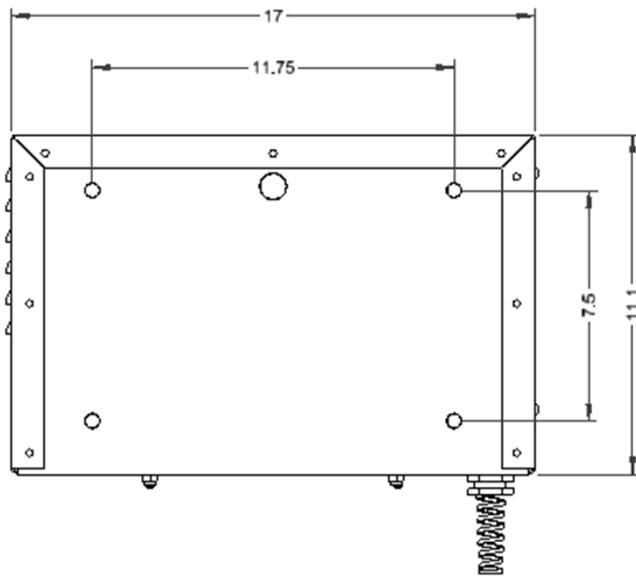


- **Installation Instructions:**
- Determine location to mount unit (“**DANGER**” “**THIS EQUIPMENT INCORPORATES PARTS SUCH AS SWITCHES, MOTORS, OR THE LIKE THAT TEND TO PRODUCE ARCS OR SPARKS THAT CAN CAUSE AN EXPLOSION. WHEN LOCATED IN GASOLINE-DISPENSING AND SERVICE STATIONS INSTALL AND USE AT LEAST 20 FEET (6 M) HORIZONTALLY FROM THE EXTERIOR ENCLOSURE OF ANY DISPENSING PUMP AND AT LEAST 18 INCHES (450 MM) ABOVE A DRIVEWAY OR GROUND LEVEL.**”
- Run electrical service to that location.
- **Grounding Instructions:** This appliance must be connected to a grounded metal, permanent wiring system; or an equipment-grounding conductor must be run with the circuit conductors and connected to the equipment-grounding terminal or lead on the appliance.
- All local and national electric codes must be followed for installation and use.
- Licensed electricians are recommended for installation.

PRODUCT DIMENSIONS



Wall mounting:



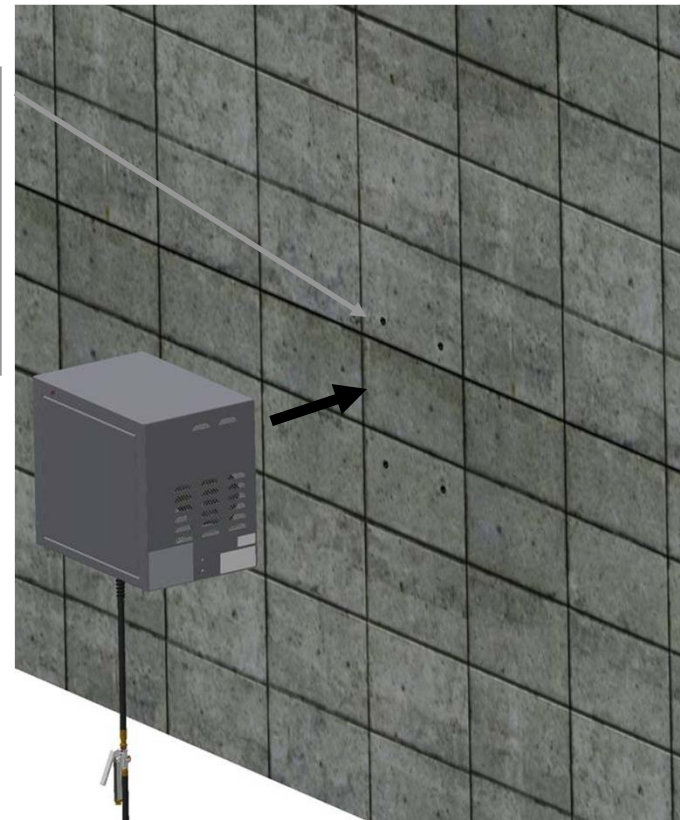
Drill holes according to rear of cabinet 7.5" x 11.75" bolt pattern.

WALL MOUNTING PATTERN, REAR VIEW:

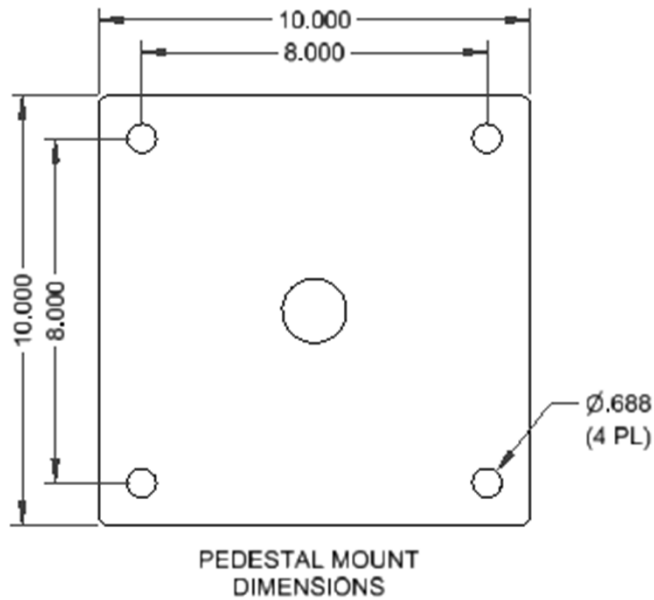
Use minimum 3/8" diameter bolt and drill/anchor at least 4" into block or concrete.

After drilling holes in concrete wall for mounting, open cabinet door and lift/align cabinet to wall and fasten with customer supplied hardware.

Use two people!!



8819-50W-P pedestal mounting:



PEDESTAL MOUNTING PATTERN, BOTTOM VIEW:

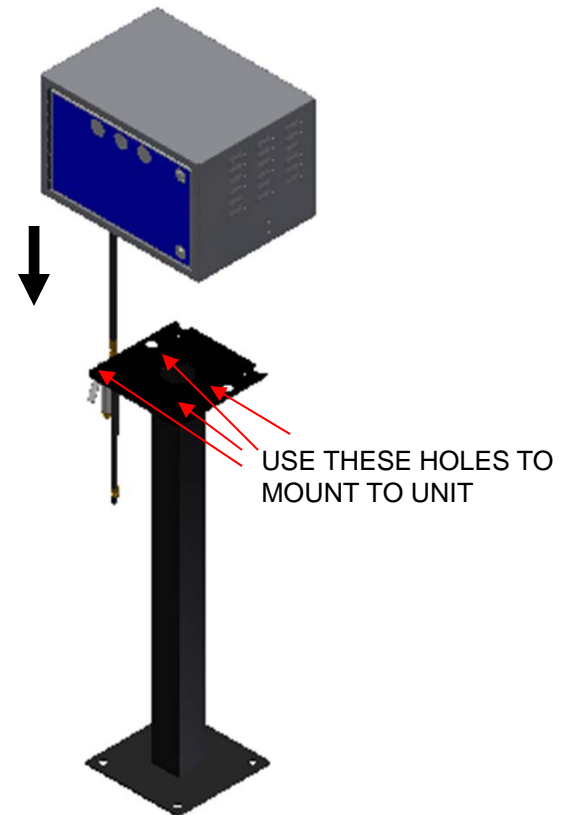
Use minimum 3/8" diameter stud and drill/anchor at least 4" into concrete.

Vault Mounting:

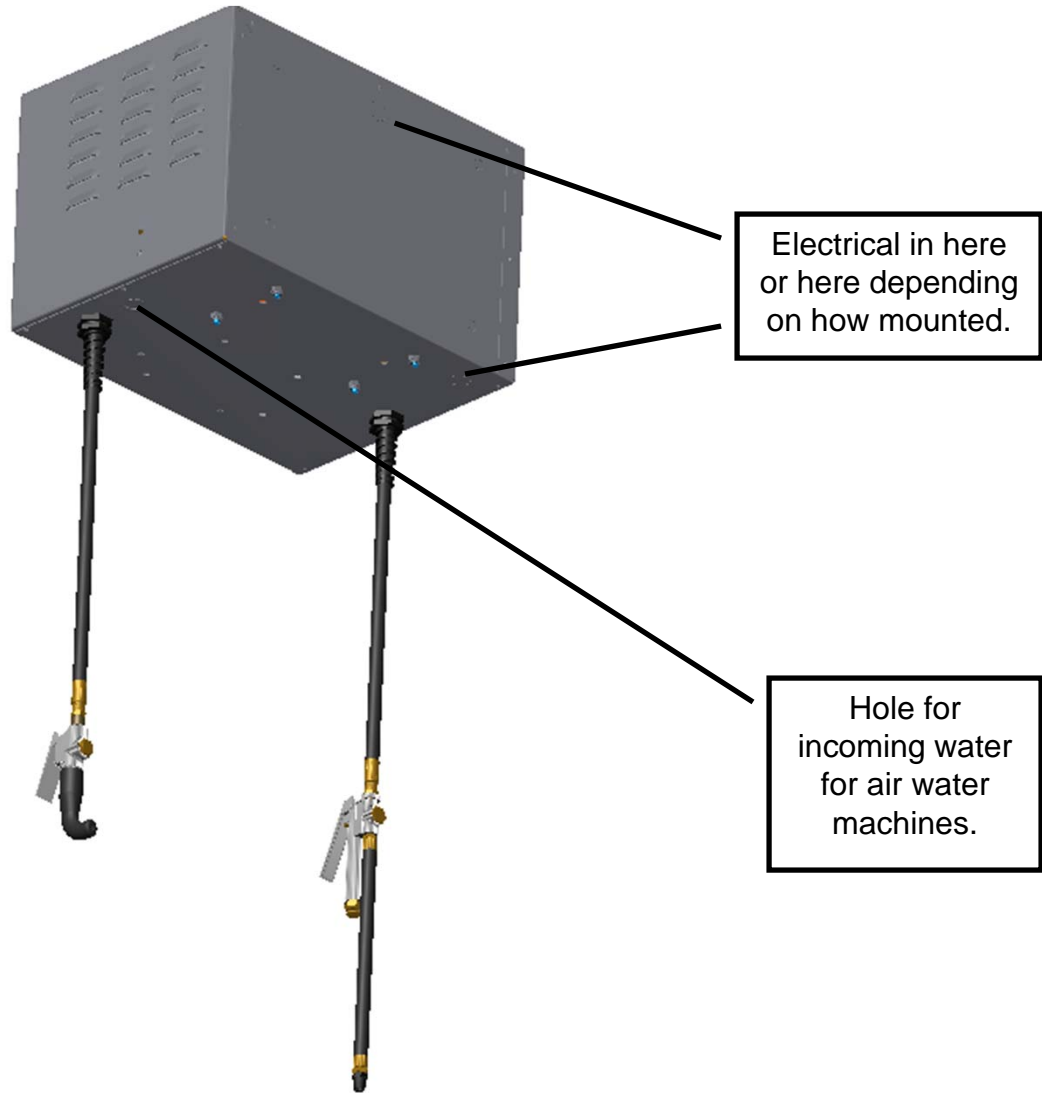
See Manual "8685 Vault Mount Instructions"

After mounting pedestal to concrete, open cabinet door and lift/align cabinet to pedestal with nuts/washers to carriage bolts on pedestal mounting plate.

Use two people!!



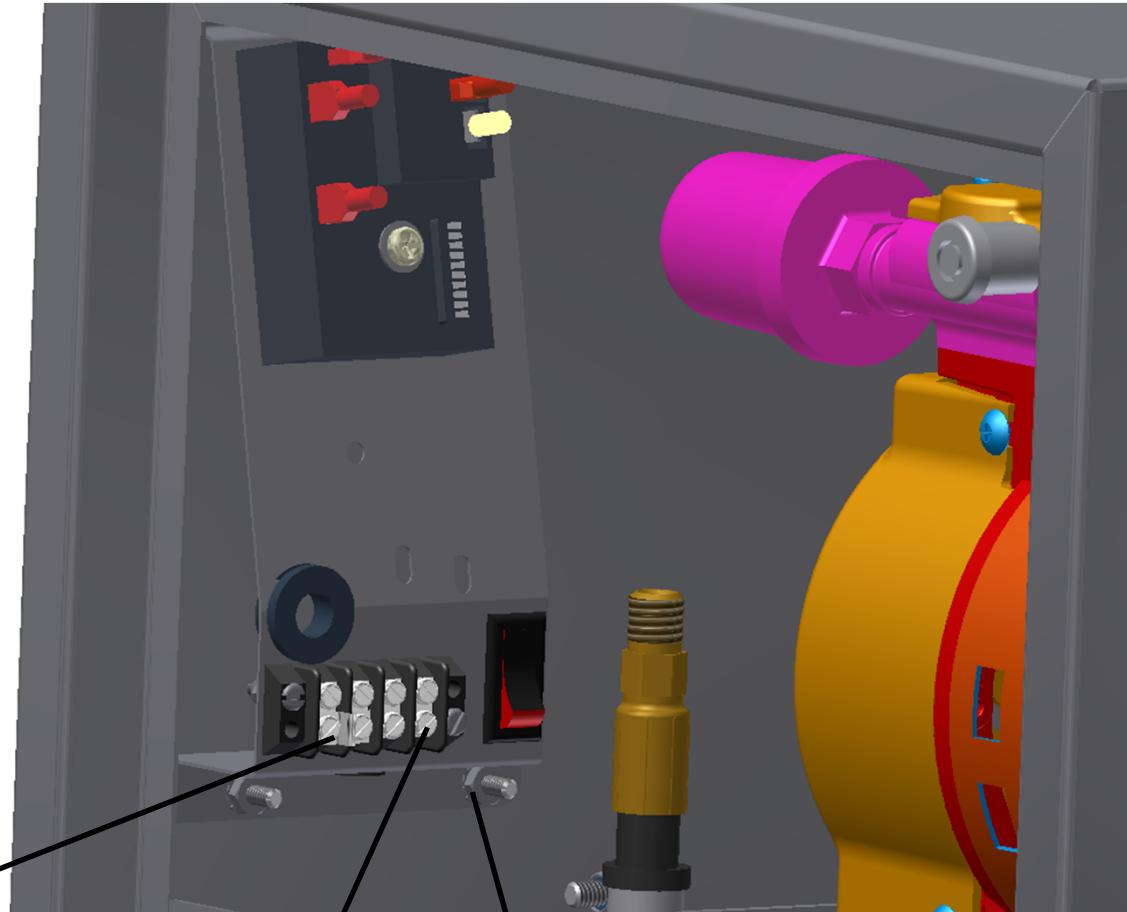
8685 Cabinet:



Electrical:

Open door to air machine
to access terminal strip.

**NOTE: AIR
MACHINE
SHOULD BE
INSTALLED
PER LOCAL
ELECTRICAL
CODES BY
QUALIFIED
ELECTRICIAN.**



Consult electrical
diagram on last
page of manual
for specifics.
Connect 120V
white "neutral"
here.

Consult electrical diagram
on last page of manual for
specifics. Connect 120V
black "hot" here.

Consult electrical
diagram on last
page of manual
for specifics.
Connect green
"ground" here.

Hose Installation:



•Hoses do not come installed in unit. A hardware pack has been sent with unit for the Installation as follows.

•**IMPORTANT: BEFORE INSTALLING HOSE AND FILTER TO HEAD OF COMPRESSOR MAKE SURE ALL PLASTIC PLUGS ARE REMOVED FROM PORTS.**

•Insert black flex strain relief into bottom of hole and attach nut.

•Slide hose thru strain relief into unit.

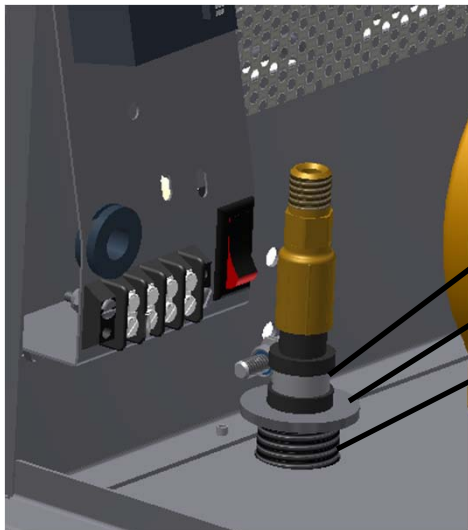
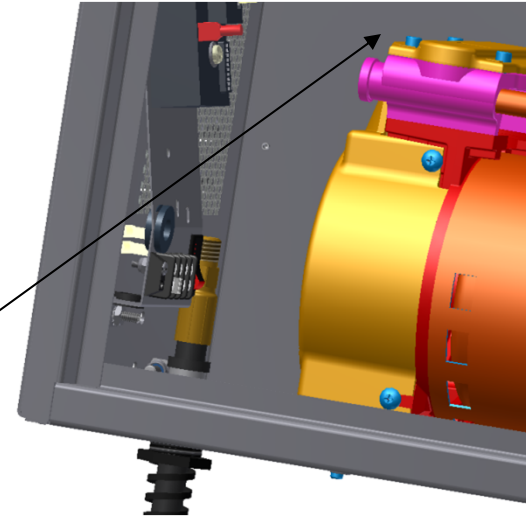
•Drop washer down the hose till it rest on flex strain inside unit.

•For air attach hose to the left back port of compressor.

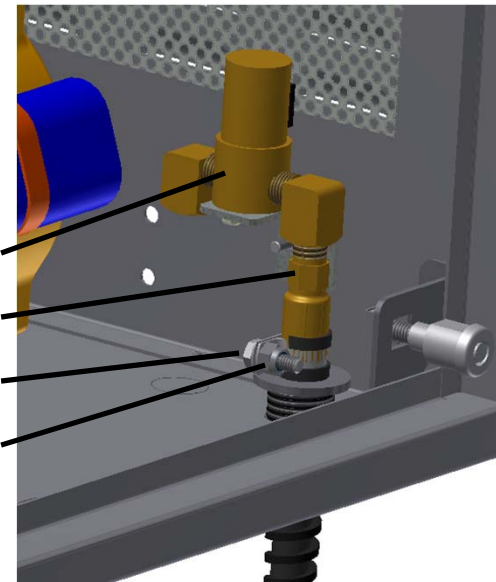
•Place clamp around hose right on top of washer sitting on flex stain relief.

•Insert bolt into hole on clamp and attach nut and tighten.

•If the machine also has water follow the steps above but instead of attaching to compressor; hose screws into elbow as shown.

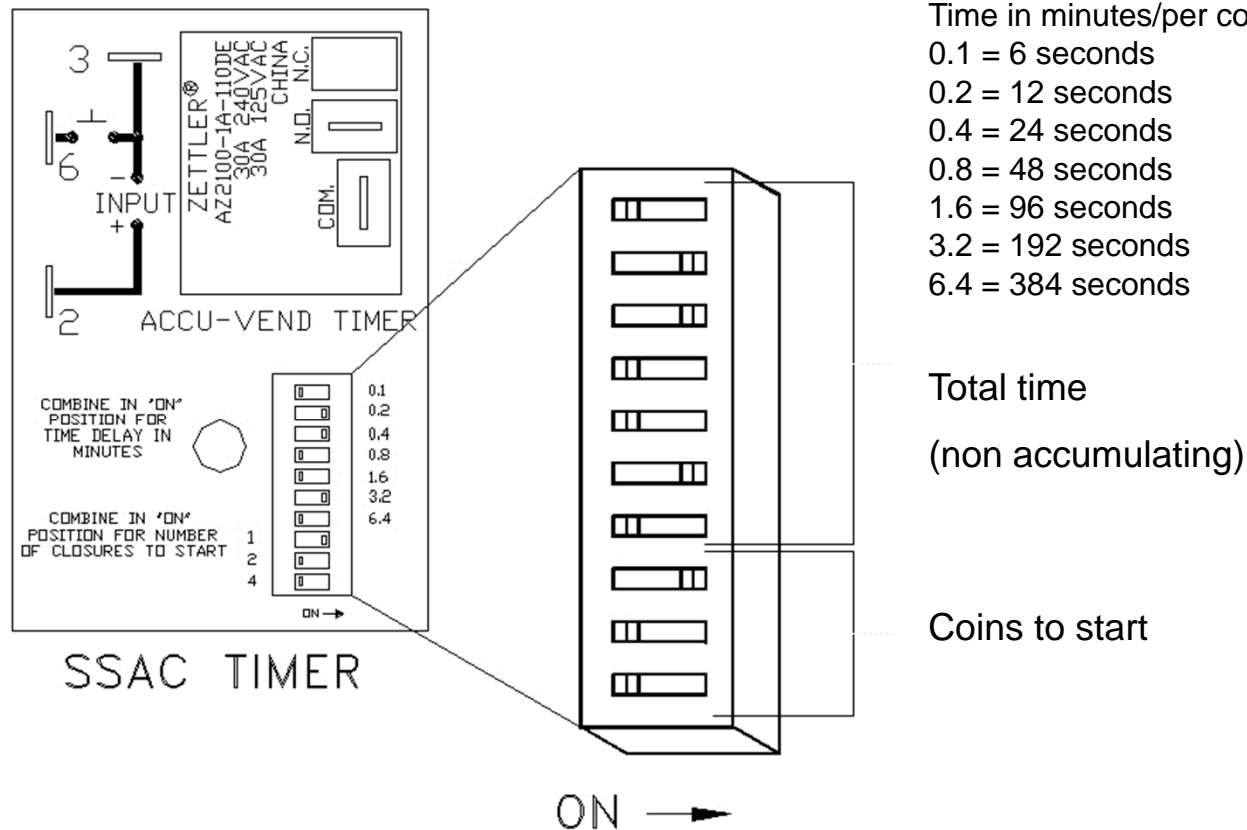


Clamp	Water solenoid
Washer	Water hose
Flex Strain Relief	Bolt
	Nut



Programming:

The below timer pictured is the standard SSAC model that allows the end user to select the "coins to start" and the "total time" by settings series of dip switches. The number of "coins to start" dip switch is how many quarters are needed to make the machine come on. In the below example, the "one coin" dip is selected which makes the unit come on with one coin. The "total time" will then need to be set, but a good rule of thumb would be 4 minutes which requires dip switches 3.2 and .8 to be set to on. This scenario means 1 quarter will provide 4 minutes of vacuum time. The total time can always be changed by adding or subtracting time. If the operator would later decide to increase the cost of the unit to "2" quarters, the 2 dip switch would need to be in the on position (all other off) and the time dip switches would still be 3.2 and .8 dips selected for 4 minutes. Timer is non accumulating so coin to start is just to start and time is total time regardless of coin to start.



Machine Operating Instructions:

- 1) Read safety instructions on previous pages.
- 2) Insert coins (or bills) to start.
- 4) Compressor will start.
- 5) Apply chuck to tire valve stem and fill to desired pressure. NOTE: For best results, remove valve stem covers on all tires before depositing money.
- 6) Hang hose up when finished.

Maintenance:

- **All servicing of machine should be conducted by an authorized service representative!**
- Periodically inspect hose, chuck, and chuck washer for wear or fatigue.
- Every month remove filter from compressor and clean.
- Periodically inspect electrical wires and connections for wear or fatigue.
- Clean canister with a stainless steel cleaner as needed.
- Decals can be cleaned with mild soap and water.
- Replacement parts can be ordered through JE Adams or your nearest dealer.

WHEN PERFORMING MAINTENANCE OR TROUBLE-SHOOTING, TURN POWER OFF! QUALIFIED PERSONNEL ONLY!



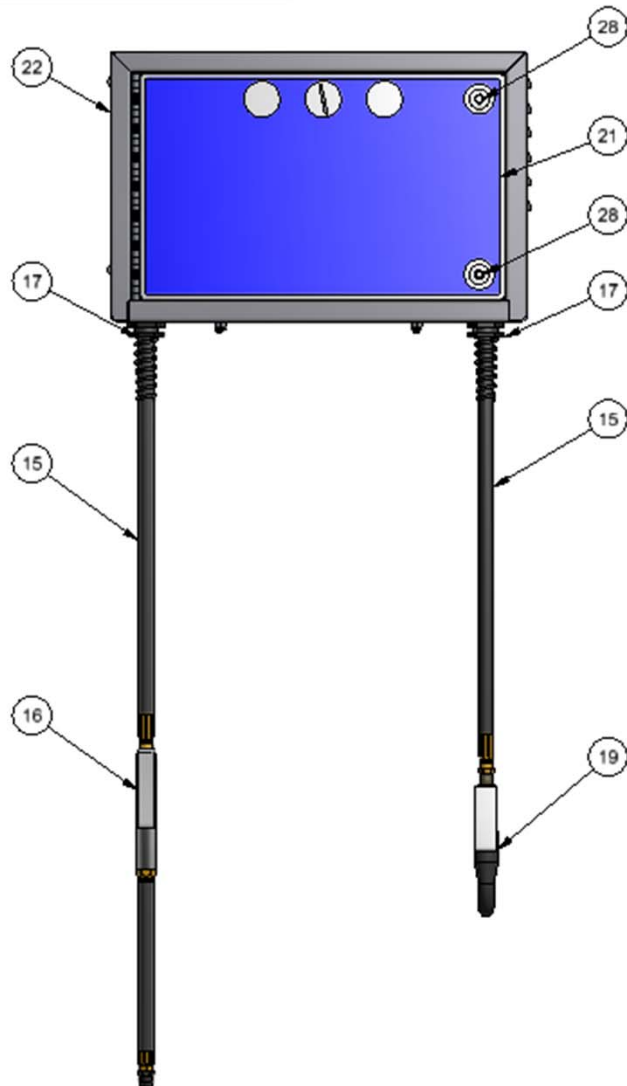
TROUBLESHOOTING:

ALWAYS DISCONNECT POWER BEFORE TROUBLESHOOTING!!

Problem	Possible cause	Solution
Unit is not powered.	Breaker inside fuse panel is not in the on position.	Turn breaker on.
	No power to machine.	Check incoming power line voltage.
	Machine power switch is not on.	Remove dome and flip switch.
	Loose connection.	Check incoming power connection.

Unit runs but will not inflate tire.	Air is leaking from unit somewhere.	Turn power off to unit, apply chuck to air source with at least 30lbs of pressure and listen carefully for leaks inside cabinet or air hose. Replace faulty component if leaking.
	If no system leaks, is compressor putting out enough pressure?	If compressor cannot force air into tire, the compressor may have exceeded its life span and need rebuilt (about 1000 hours).
	Chuck washer is worn out?	Replace rubber washer inside chuck with JE Adams PN 8533-3CW.
	Temperature is below freezing and condensation off compressor has froze in air hose.	Remove air hose and chuck and bring into warm area to thaw. Optional air dry systems are available through JE Adams if frequent problem- please call.
Unit keeps tripping breaker from incoming power source	Wrong size breaker or other components running on same circuit.	Install correct breaker for compressor and make sure line is a dedicated power source.
	Compressor or timer might be shorted out?	Isolate problem component and replace if necessary.
Unit will not start	Possible component failure	Check key components to isolate failure: Timer: Verify proper input voltage. Activate timer. If no output voltage is present when timer should be active, replace timer.
		Coin mech: If using a mechanical coin mech, remove the wires leading to the timer from the coin mech and tap the together one time for each coin necessary to start the timer. If machine starts, replace the coin mech.
Unit will not dispense water (water machines only).	Is source water turned on and not frozen?	Turn on water to system and make sure temperature is above 32 deg.
	Is water solenoid getting power from timer?	If getting power from timer, replace solenoid.


PART NO. 8685-2GW



BILL OF MATERIALS			
ITEM	PART NUMBER	DESCRIPTION	QTY
1	1079-3	GASKET, DOOR SEAL	49.36"
2	5601D4	1/4-20 x 3/4 HHCS-SS	2
3	5603D2	1/4 Std NC Nylock Nut	6
4	5604D1	#10-24 x 1/2 CARR BOLT	4
5	5606D21	WASHER, FLAT, 3/4 SAE, ID 13/16	2
6	5609D1	STAR WASHER #8	2
7	5610D1	8x32 x 1/2 SLOT SCREW	2
8	5611D2	NUT, 10-24 UNC KEPP- ZINC	4
9	5644D2	CAGE NUT	2
10	5684D2	1/2" DIA. HOSE CLAMP	2
11	5800D6	90 DEG. NPT STREET ELBOW	2
12	6408	CARDBOARD INSERT	2
13	6409	CARDBOARD BOX	1
14	8183	DECAL, DISCONNECT POWER	1
15	8532-25	AIR HOSE ASSY, 1/4" X 25'	2
16	8533-8	TIRE INFLATOR W/ GAUGE	1
17	8549	FLEX STRAIN RELIEF	2
18	8551	SOLENOID BRACKET	1
19	8647	WATER SPOUT, 1/4" NPT	1
20	8659-110	COIN TRAY, AIR MACHINE	1
21	8659-126AW	DECAL, LOW COST AIR/WATER	1
22	8659-3W-100	CABINET WELDMENT, AIR MACHINE, SCREW LOCKS	1
23	8670KIT-2W	HARDWARE PACK, PED AIR/WATER MACHINE	1
24	8673	TIMER ASSEMBLY-SSAC	1
25	8697	SOLENOID 110V	1
26	8732	PRODUCT NAMEPLATE	1
27	8754	DECAL, DANGER	1
28	8958-2	MEDECO SCREW LOCK	2
29	9862	110VAC 3/4 TWIN GAST COMPRESSOR	1

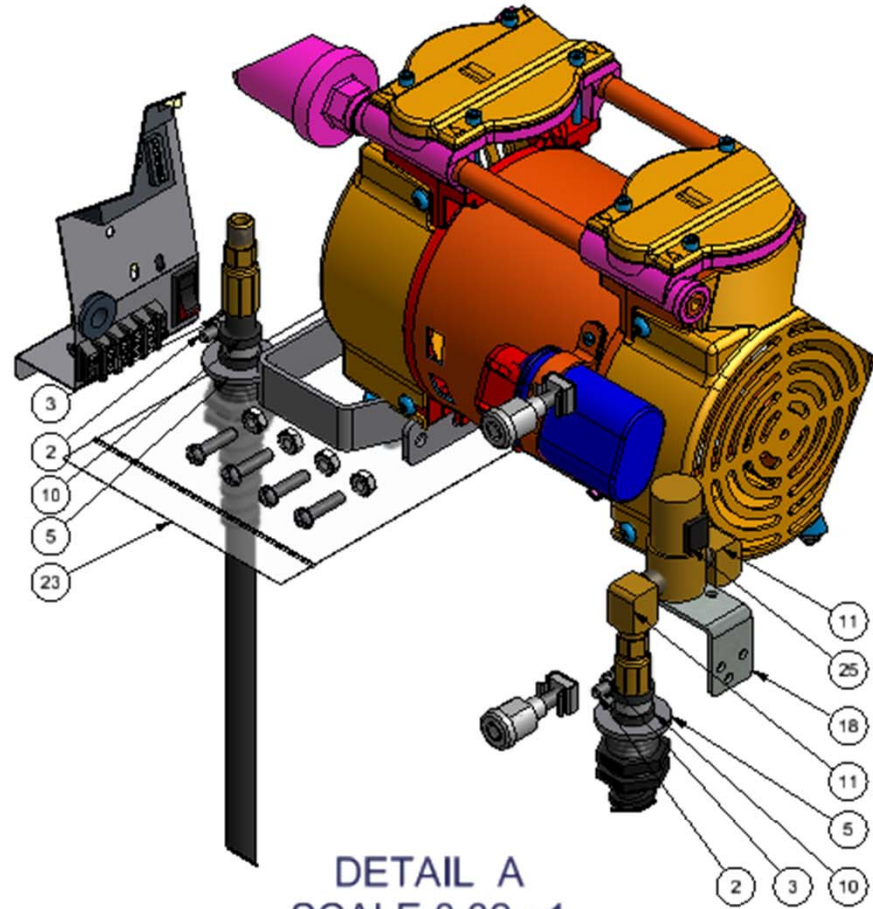
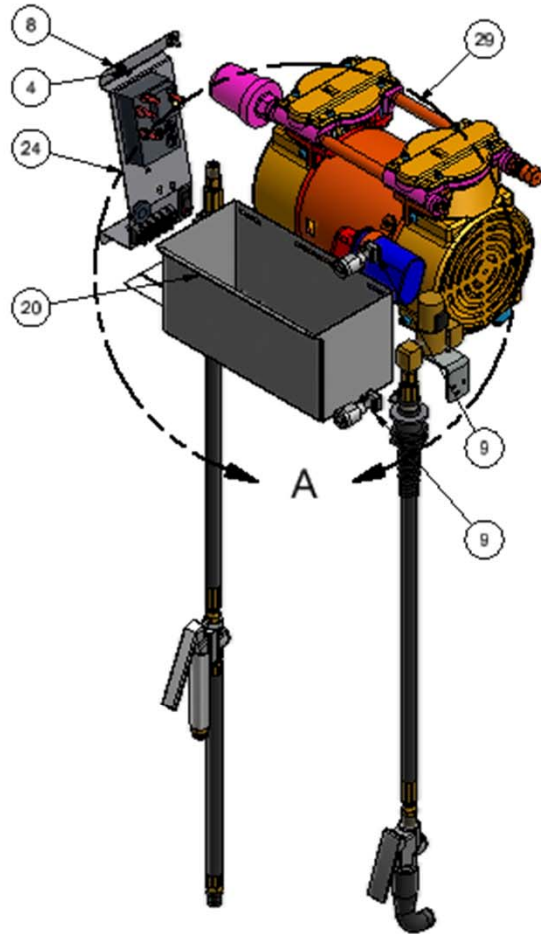
NOTE:

- 1) MACHINE BE USED WITH PEDESTAL 8819-50W-P TO MOUNT DIRECTLY TO A FLAT HARD SURFACE OR MACHINE CAN BE MOUNTED DIRECTLY TO A WALL.
- 2) OPTIONAL COIN BOX SECURE COVER KIT 8659-110-2A-KIT MAY BE USED WITH MACHINE.
- 3) USE WIRE DIAGRAM "8670 SERIES, SSAC, ALL COMPRESSORS".
- 4) PLEASE NOTE ON THE WIRE DIAGRAM THAT THE 8673-9 DOES NOT APPLY TO THIS UNIT.


TITLE		AIR WATER MACHINE ASSEMBLY, SCREW LOCK	
UNSPECIFIED TOLERANCES	MATERIAL	 CEDAR RAPIDS, IOWA	
1 PL ±.030	SCALE		
2 PL ±.010	DRAWN BY CHAD K.		
3 PL ±.003	DATE 9/5/2012		
ANGLE ±1.0°		PART NO. 8685-2GW	REV.

REV	NO.	DESCRIPTION	DATE	BY
THIS DOCUMENT SHALL NOT BE REPRODUCED NOR SHALL THE INFORMATION THEREIN BE USED BY OR DISCLOSED TO OTHERS EXCEPT AS AUTHORIZED BY J.E. ADAMS INDUSTRIES				

PART NO. 8685-2GW

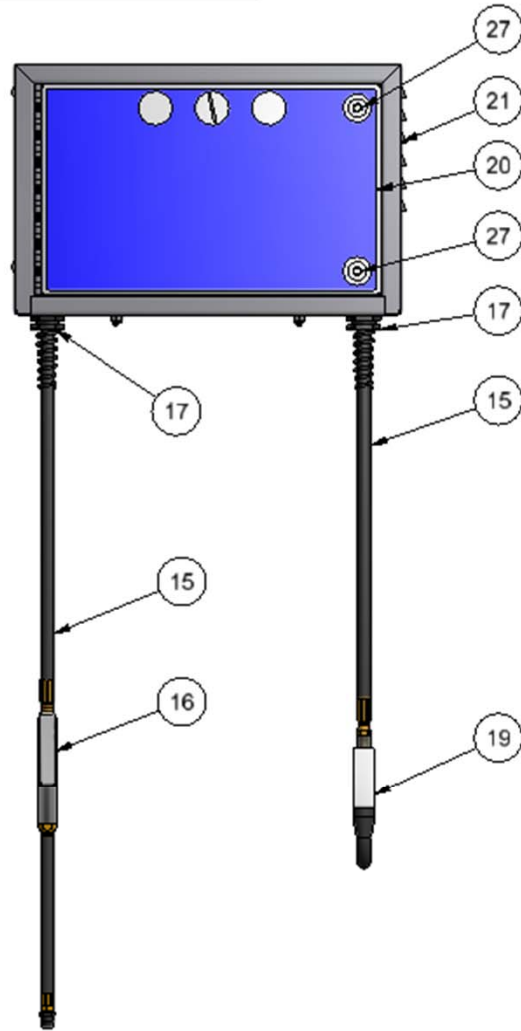


DETAIL A
SCALE 0.32 : 1

TITLE		AIR WATER MACHINE ASSEMBLY, SCREW LOCK		
UNSPECIFIED TOLERANCES	MATERIAL	CEDAR RAPIDS, IOWA		
1 PL ±.030	SCALE			
2 PL ±.010	DRAWN BY			CHAD K.
3 PL ±.003	DATE			9/5/2012
ANGLE ±1.0°	PART NO.	8685-2GW	REV.	

REV	NO.	DESCRIPTION	DATE	BY
THIS DOCUMENT SHALL NOT BE REPRODUCED NOR SHALL THE INFORMATION THEREIN BE USED BY OR DISCLOSED TO OTHERS EXCEPT AS AUTHORIZED BY J.E. ADAMS INDUSTRIES				

PART NO. 8685-2GWVR



BILL OF MATERIALS			
ITEM	PART NUMBER	DESCRIPTION	QTY
1	1079-3	GASKET, DOOR SEAL	49.36"
2	5601D4	1/4-20 x 3/4 HHCS-SS	2
3	5603D2	1/4 Std NC Nylock Nut	6
4	5604D1	#10-24 x 1/2 CARR BOLT	4
5	5606D21	WASHER, FLAT, 3/4 SAE, ID 13/16	2
6	5609D1	STAR WASHER #8	2
7	5610D1	8x32 x 1/2 SLOT SCREW	2
8	5611D2	NUT, 10-24 UNC KEPP- ZINC	4
9	5644D2	CAGE NUT	2
10	5684D2	1/2" DIA. HOSE CLAMP	2
11	5800D6	90 DEG. NPT STREET ELBOW	2
12	6408	CARDBOARD INSERT	2
13	6409	CARDBOARD BOX	1
14	8183	DECAL, DISCONNECT POWER	1
15	8532-25	AIR HOSE ASSY, 1/4" X 25'	2
16	8533-8	TIRE INFLATOR W/ GAUGE	1
17	8549	FLEX STRAIN RELIEF	2
18	8551	SOLENOID BRACKET	1
19	8647	WATER SPOUT, 1/4" NPT	1
20	8659-126AW	DECAL, LOW COST AIR/WATER	1
21	8659-3W-100VR	CABINET WELDMENT, AIR MACHINE, SCREW LOCKS, VR	1
22	8670KIT-2W	HARDWARE PACK, PED AIR/WATER MACHINE	1
23	8673	TIMER ASSEMBLY-SSAC	1
24	8697	SOLENOID 110V	1
25	8732	PRODUCT NAMEPLATE	1
26	8754	DECAL, DANGER	1
27	8958-2	MEDECO SCREW LOCK	2
28	9862	110VAC 3/4 TWIN GAST COMPRESSOR	1
29	1009	COIN FUNNEL	1

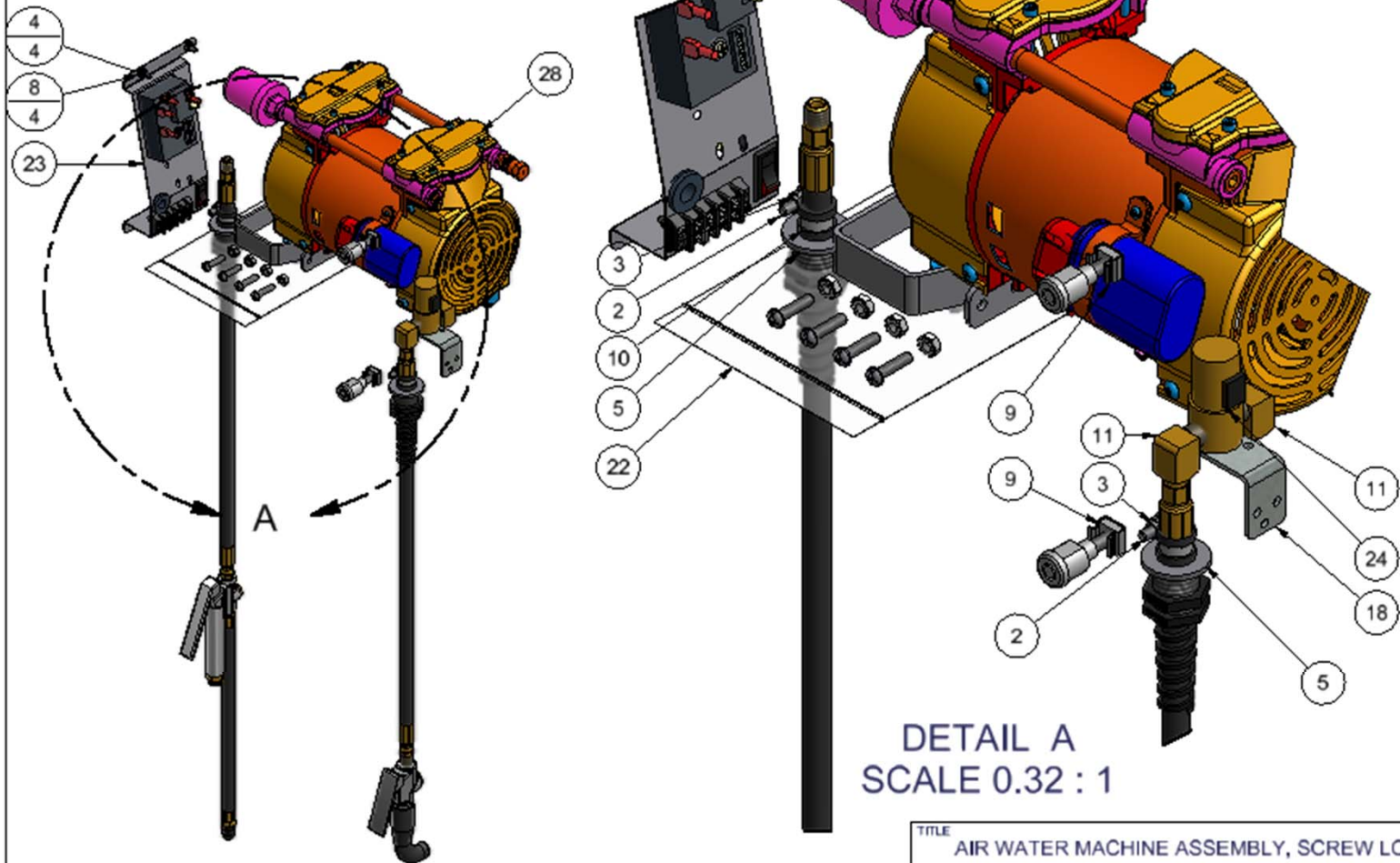
NOTE:

- 1) TO BE USED WITH VAULT KIT 8685-3100A.
- 2) USE WIRE DIAGRAM "8670 SERIES, SSAC, ALL COMPRESSORS".
- 3) PLEASE NOTE ON THE WIRE DIAGRAM THAT THE 8673-9 DOES NOT APPLY TO THIS UNIT.
- 4) SEND 1009 FUNNEL WITH MACHINE



TITLE		AIR WATER MACHINE ASSEMBLY, SCREW LOCK, VR		
UNSPECIFIED TOLERANCES	MATERIAL	CEDAR RAPIDS, IOWA		
1 PL ±.030	SCALE			
2 PL ±.010	DRAWN BY			CHAD K.
3 PL ±.003	DATE			9/11/2012
ANGLE ±1.0°	PART NO.	8685-2GWVR		
REV.		REV.		

REV	NO.	DESCRIPTION	DATE	BY
THIS DOCUMENT SHALL NOT BE REPRODUCED NOR SHALL THE INFORMATION THEREIN BE USED BY OR DISCLOSED TO OTHERS EXCEPT AS AUTHORIZED BY J.E. ADAMS INDUSTRIES				

PART NO. 8685-2GWVR

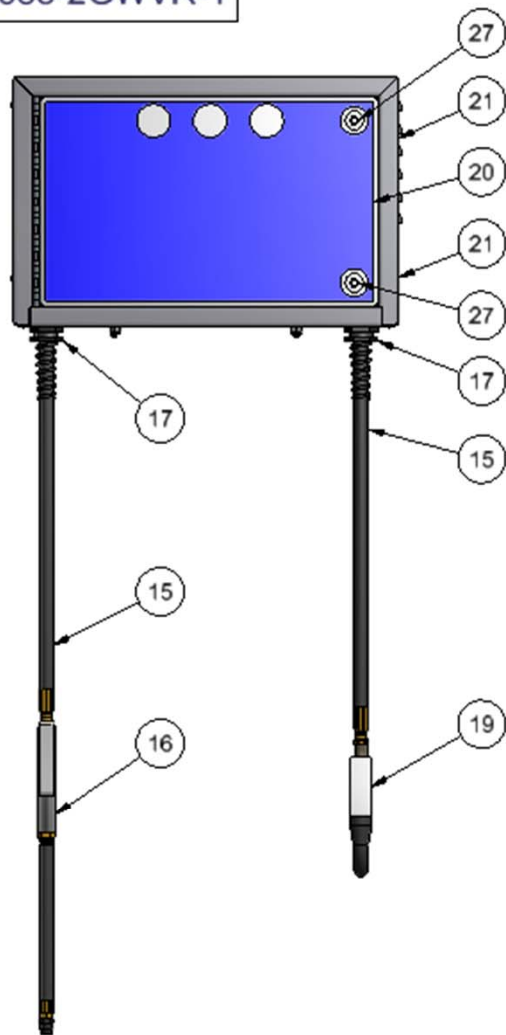


DETAIL A
SCALE 0.32 : 1

TITLE		CEDAR RAPIDS, IOWA	
AIR WATER MACHINE ASSEMBLY, SCREW LOCK, VR		MATERIAL	
UNSPECIFIED TOLERANCES		SCALE	
1 PL	±.030	DRAWN BY	CHAD K.
2 PL	±.010	DATE	9/11/2012
3 PL	±.003		
ANGLE	±1.0°		
		PART NO.	8685-2GWVR
THIS DOCUMENT SHALL NOT BE REPRODUCED NOR SHALL THE INFORMATION THEREIN BE USED BY OR DISCLOSED TO OTHERS EXCEPT AS AUTHORIZED BY J.E. ADAMS INDUSTRIES		REV.	

REV	NO.	DESCRIPTION	DATE	BY
THIS DOCUMENT SHALL NOT BE REPRODUCED NOR SHALL THE INFORMATION THEREIN BE USED BY OR DISCLOSED TO OTHERS EXCEPT AS AUTHORIZED BY J.E. ADAMS INDUSTRIES				

PART NO. 8685-2GWVR-1



BILL OF MATERIALS

ITEM	PART NUMBER	DESCRIPTION	QTY
1	1079-3	GASKET, DOOR SEAL	49.36"
2	5601D4	1/4-20 x 3/4 HHCS-SS	2
3	5603D2	1/4 Std NC Nylock Nut	6
4	5604D1	#10-24 x 1/2 CARR BOLT	4
5	5606D21	WASHER, FLAT, 3/4 SAE, ID 13/16	2
6	5609D1	STAR WASHER #8	2
7	5610D1	8x32 x 1/2 SLOT SCREW	2
8	5611D2	NUT, 10-24 UNC KEPP- ZINC	4
9	5644D2	CAGE NUT	2
10	5684D2	1/2" DIA. HOSE CLAMP	2
11	5800D6	90 DEG. NPT STREET ELBOW	2
12	6408	CARDBOARD INSERT	2
13	6409	CARDBOARD BOX	1
14	8183	DISCONNECT POWER DECAL	1
15	8532-25	AIR HOSE ASSY, 1/4" X 25'	2
16	8533-8	TIRE INFLATOR W/ GAUGE	1
17	8549	FLEX STRAIN RELIEF	2
18	8551	SOLENOID BRACKET	1
19	8647	WATER SPOUT, 1/4" NPT	1
20	8659-126AW	DECAL, LOW COST AIR/WATER	1
21	8659-3W-100VR-1	CABINET WELDMENT, AIR MACHINE, SCREW LOCKS, VR, EXTERNAL COIN	1
22	8670KIT-2W	HARDWARE PACK, PED AIR/WATER MACHINE	1
23	8673	TIMER ASSEMBLY-SSAC	1
24	8697	SOLENOID 110V	1
25	8732	PRODUCT NAMEPLATE	1
26	8754	DECAL, DANGER	1
27	8958-2	MEDECO SCREW LOCK	2
28	9862	110VAC 3/4 TWIN GAST COMPRESSOR	1

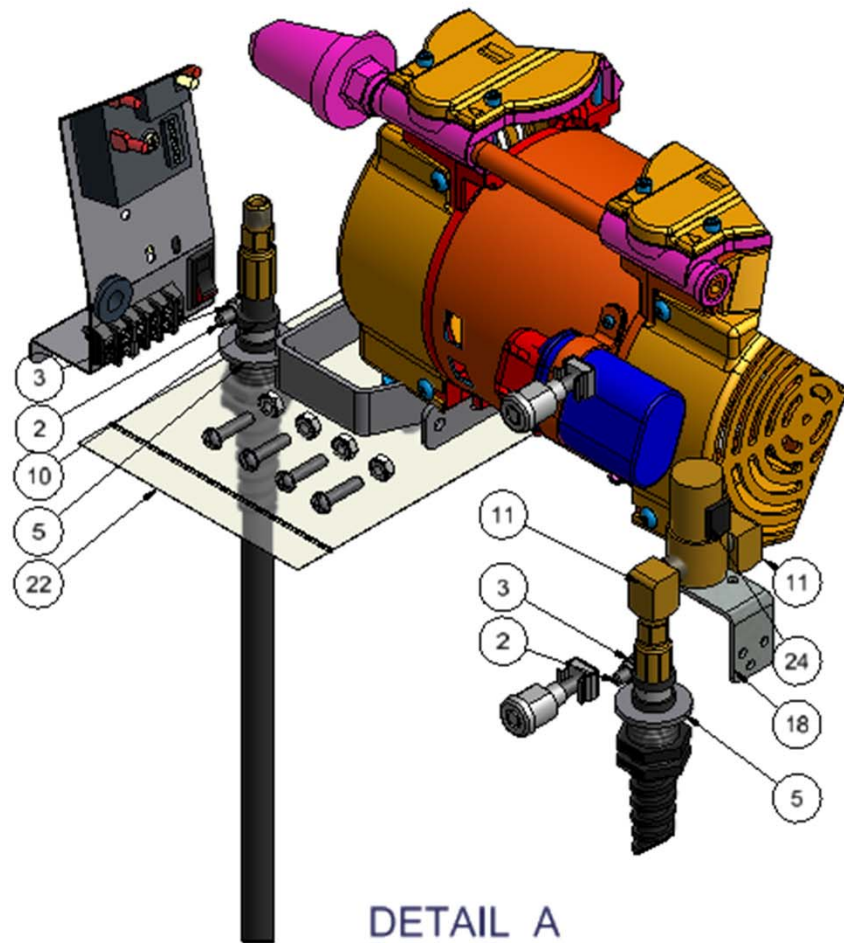
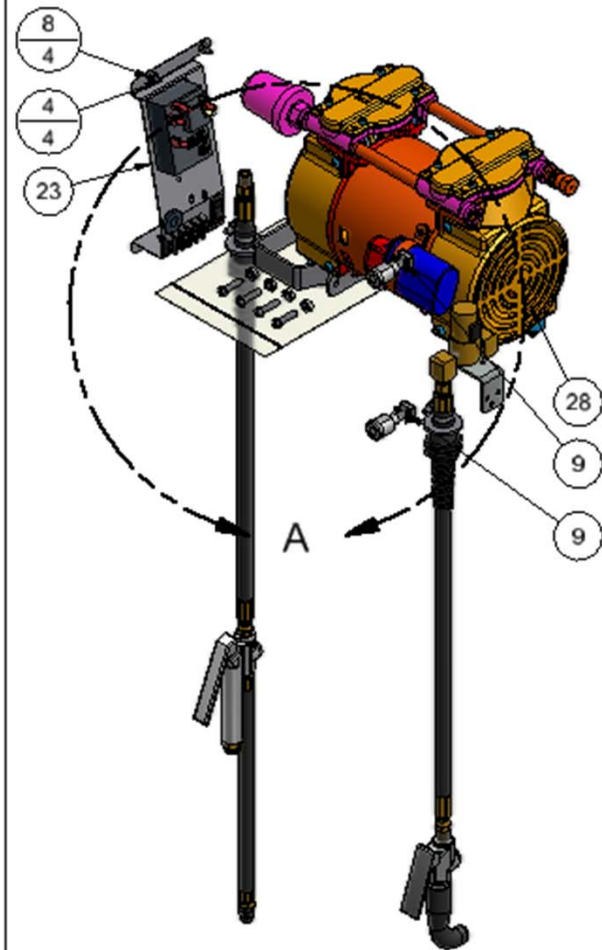
NOTE:

- 1) TO BE USED WITH VAULT KIT 8685-3100A-1.
- 2) USE WIRE DIAGRAM "8670 SERIES, SSAC, ALL COMPRESSORS".
- 3) PLEASE NOTE ON THE WIRE DIAGRAM THAT THE 8673-9 DOES NOT APPLY TO THIS UNIT.


TITLE		MATERIAL	
AIR WATER MACHINE ASSEMBLY, SCREW LOCK, VR, EXTERNAL COIN		CEDAR RAPIDS, IOWA	
UNSPECIFIED TOLERANCES	SCALE		
1 PL ±.030	DRAWN BY CHAD K.		
2 PL ±.010	DATE 9/11/2012		
3 PL ±.003			
ANGLE ±1.0°		PART NO. 8685-2GWVR-1	REV.

REV	NO.	DESCRIPTION	DATE	BY
THIS DOCUMENT SHALL NOT BE REPRODUCED NOR SHALL THE INFORMATION THEREIN BE USED BY OR DISCLOSED TO OTHERS EXCEPT AS AUTHORIZED BY J.E. ADAMS INDUSTRIES				

PART NO. 8685-2GWVR-1



DETAIL A
SCALE 0.32 : 1

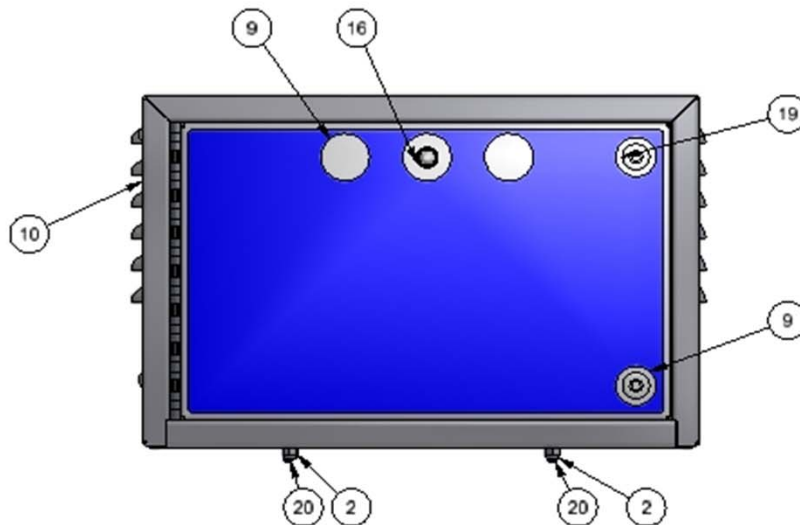
TITLE AIR WATER MACHINE ASSEMBLY, SCREW LOCK, VR, EXTERNAL COIN		CEDAR RAPIDS, IOWA	
UNSPECIFIED TOLERANCES	MATERIAL		
1 PL ±.030	SCALE		
2 PL ±.010	DRAWN BY CHAD K.		
3 PL ±.003	DATE 9/11/2012		
ANGLE ±1.0°		PART NO. 8685-2GWVR-1	REV.

REV	NO.	DESCRIPTION	DATE	BY
THIS DOCUMENT SHALL NOT BE REPRODUCED NOR SHALL THE INFORMATION THEREIN BE USED BY OR DISCLOSED TO OTHERS EXCEPT AS AUTHORIZED BY J.E. ADAMS INDUSTRIES				

PART NO. **8685-2FG**

NOTE:

- 1) MACHINE BE USED WITH PEDESTAL 8819-50 TO MOUNT DIRECTLY TO A FLAT HARD SURFACE OR MACHINE CAN BE MOUNTED DIRECTLY TO A WALL.
- 2) USE WIRE DIAGRAM "8670 SERIES, SSAC, ALL COMPRESSORS".
- 3) PLEASE NOTE ON THE WIRE DIAGRAM THAT THE 8673-9 DOES NOT APPLY TO THIS UNIT.
- 4) AIR HOSE AND CHUCK NOT TO BE INSTALLED IN UNIT. SEND ALONG WITH UNIT AND TO BE INSTALLED BY CUSTOMER. HARWARE KIT 8685KIT-A TO BE SENT ALONG TO AID IN HOSE INSTALLATION.



BILL OF MATERIALS

ITEM	PART NUMBER	DESCRIPTION	QTY
1	1079-3	GASKET, DOOR SEAL	49.38
2	5603D2	1/4 Std NC Nylock Nut	4
3	5604D1	#10-24 x 1/2 CARR BOLT	4
4	5611D2	NUT, 10-24 UNC KEPP- ZINC	4
5	5644D1	CAGE NUT, 5/16-18	2
6	6408	CARDBOARD INSERT	2
7	6409	CARDBOARD BOX	1
8	8183	DECAL, DISCONNECT POWER	1
9	8659-126-KIT	DECAL, LOW COST AIR	1
10	8659-3W-100-F	CABINET WELDMENT, AIR MACHINE, SCREW LOCKS, FREE	1
11	8659-999	DECAL, MAX TIME	1
12	8670KIT-2	HARDWARE PACK, PED AIR MACHINE	1
13	8673	TIMER ASSEMBLY-SSAC	1
14	8685KIT-A	KIT, AIR HOSE INSTALLATION	1
15	8726	PUSH BUTTON	1
16	8727	BOOT, RUBBER, PUSHBUTTON	1
17	8732	PRODUCT NAMEPLATE	1
18	8754	DECAL, DANGER	1
19	8958-2	MEDECO SCREW LOCK	2
20	9862	110VAC 3/4 TWIN GAST COMPRESSOR	1
34	8437D002	ETL LABEL, AIR MACHINES	1

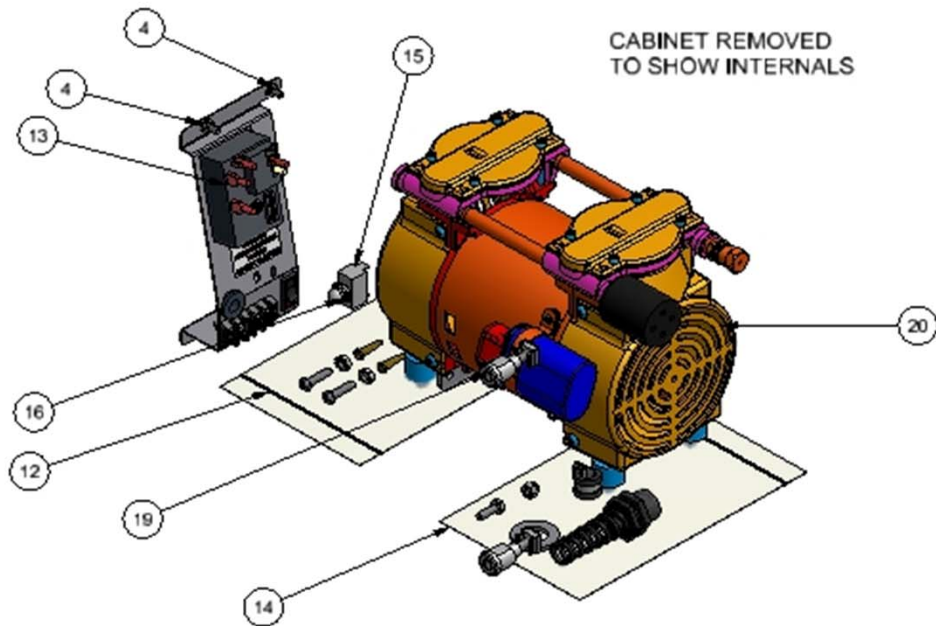
SHEET 1 OF 2

TITLE	
FREE AIR MACHINE ASSEMBLY, SCREW LOCK	
UNSPECIFIED TOLERANCES	MATERIAL
1 PL ±.030	SCALE
2 PL ±.010	DRAWN BY CHAD K.
3 PL ±.003	DATE 12/18/2012
ANGLE ±1.0°	PART NO. 8685-2FG
CEDAR RAPIDS, IOWA	
REV. B	


REV	NO.	DESCRIPTION	DATE	BY
B	7153	REMOVED 5644D2 AND ADDED 5644D1	8-29-13	CK
A	7123	ADDED SHEET 2 TO DRAWING	6-6-13	CK

THIS DOCUMENT SHALL NOT BE REPRODUCED NOR SHALL THE INFORMATION THEREIN BE USED BY OR DISCLOSED TO OTHERS EXCEPT AS AUTHORIZED BY J.E. ADAMS INDUSTRIES

PART NO. 8685-2FG



SHEET 2 OF 2

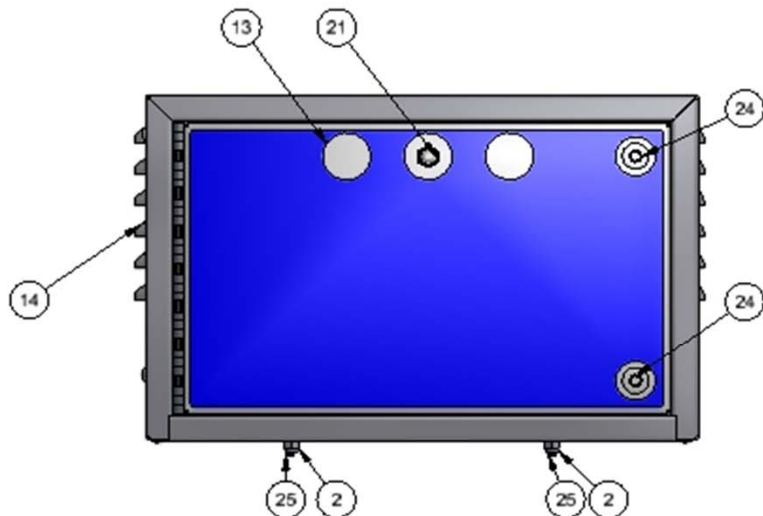
TITLE		FREE AIR MACHINE ASSEMBLY, SCREW LOCK	
UNSPECIFIED TOLERANCES	MATERIAL	 CEDAR RAPIDS, IOWA	
1 PL ±.030	SCALE		
2 PL ±.010	DRAWN BY	CHAD K.	
3 PL ±.003	DATE	12/18/2012	
ANGLE ±1.0°	PART NO.	8685-2FG	REV. B

REV	NO.	DESCRIPTION	DATE	BY
THIS DOCUMENT SHALL NOT BE REPRODUCED NOR SHALL THE INFORMATION THEREIN BE USED BY OR DISCLOSED TO OTHERS EXCEPT AS AUTHORIZED BY J.E. ADAMS INDUSTRIES				

PART NO. **8685-2FGW**

NOTE:

- 1) MACHINE BE USED WITH PEDESTAL 8819-50 TO MOUNT DIRECTLY TO A FLAT HARD SURFACE OR MACHINE CAN BE MOUNTED DIRECTLY TO A WALL.
- 2) USE WIRE DIAGRAM "8670 SERIES, SSAC, ALL COMPRESSORS".
- 3) PLEASE NOTE ON THE WIRE DIAGRAM THAT THE 8673-9 DOES NOT APPLY TO THIS UNIT.
- 4) AIR HOSE, WATER HOSE AND CHUCK NOT TO BE INSTALLED IN UNIT. SEND ALONG WITH UNIT AND TO BE INSTALLED BY CUSTOMER. HARWARE KIT 8685KIT-B TO BE SENT ALONG TO AID IN HOSE INSTALLATION.



BILL OF MATERIALS

ITEM	PART NUMBER	DESCRIPTION	QTY
1	1079-3	GASKET, DOOR SEAL	49.36'
2	5603D2	1/4 Std NC Nylock Nut	4
3	5604D1	#10-24 x 1/2 CARR BOLT	4
4	5609D1	STAR WASHER #8	2
5	5610D1	8x32 x 1/2 SLOT SCREW	2
6	5611D2	NUT, 10-24 UNC KEPP- ZINC	4
7	5644D1	CAGE NUT, 5/16-18	2
8	5800D6	90 DEG. NPT STREET ELBOW	2
9	6408	CARDBOARD INSERT	2
10	6409	CARDBOARD BOX	1
11	8183	DECAL, DISCONNECT POWER	1
12	8551	SOLENOID BRACKET	1
13	8659-126AW-KIT	DECAL, LOW COST AIR/WATER	1
14	8659-3W-100-F	CABINET WELDMENT, AIR MACHINE, SCREW LOCKS, FREE	1
15	8659-999	DECAL, MAX TIME	1
16	8670KIT-2W	HARDWARE PACK, PED AIR/WATER MACHINE	1
17	8673	TIMER ASSEMBLY-SSAC	1
18	8685KIT-B	KIT, AIR/WATER HOSE INSTALLATION	1
19	8697	SOLENOID 110V	1
20	8726	PUSH BUTTON	1
21	8727	BOOT, RUBBER, PUSHBUTTON	1
22	8732	PRODUCT NAMEPLATE	1
23	8754	DECAL, DANGER	1
24	8958-2	MEDECO SCREW LOCK	2
25	9862	110VAC 3/4 TWIN GAST COMPRESSOR	1
40	8437D002	ETL LABEL, AIR MACHINES	1

SHEET 1 OF 2

TITLE
FREE AIR WATER MACHINE ASSEMBLY, SCREW LOCK

REV	NO.	DESCRIPTION	DATE	BY
B	7153	REMOVED 5644D2 AND ADDED 5644D1	8-29-13	CK
A	7123	ADDED PAGE 2 TO DRAWING	6-6-13	CK

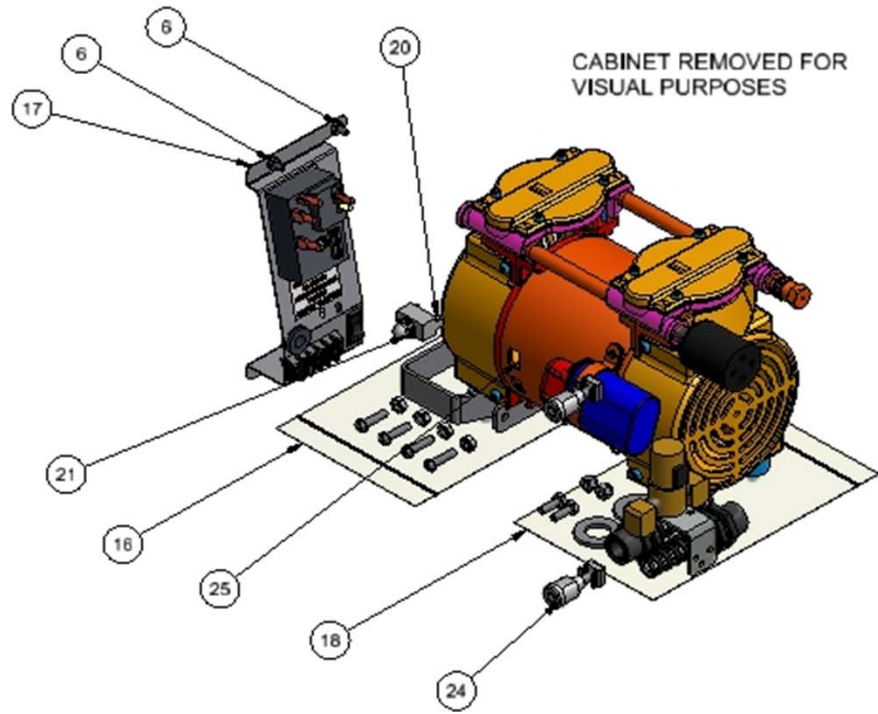
UNSPECIFIED TOLERANCES	MATERIAL
1 PL ±.030	SCALE
2 PL ±.010	DRAWN BY CHAD K.
3 PL ±.003	DATE 12/18/2012
ANGLE ±1.0°	

CEDAR RAPIDS, IOWA


PART NO. **8685-2FGW** REV. **B**

THIS DOCUMENT SHALL NOT BE REPRODUCED NOR SHALL THE INFORMATION THEREIN BE USED BY OR DISCLOSED TO OTHERS EXCEPT AS AUTHORIZED BY J.E. ADAMS INDUSTRIES

PART NO. 8685-2FGW



SHEET 2 OF 2

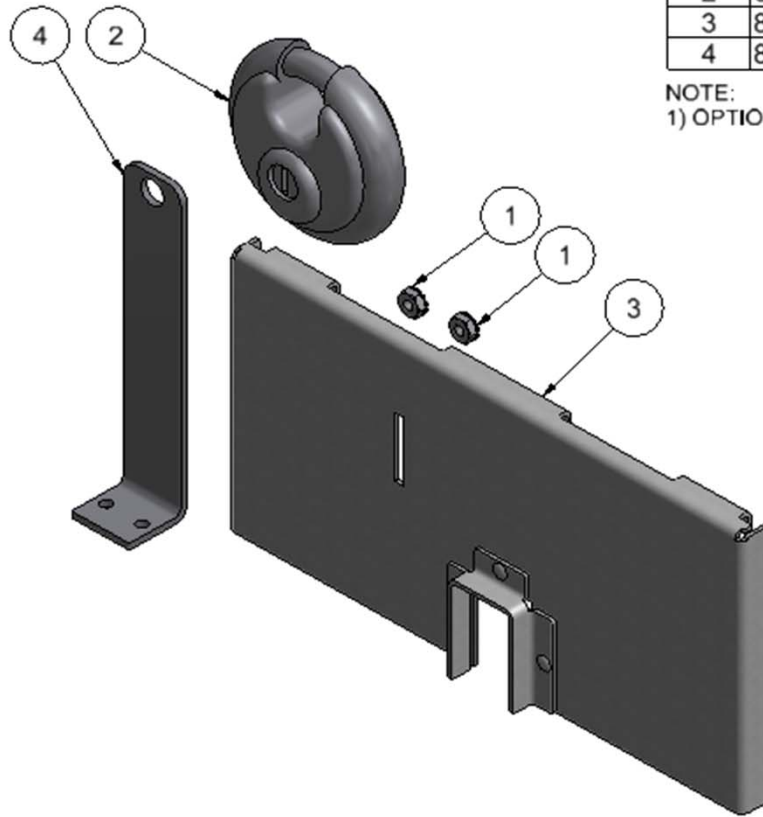
TITLE		FREE AIR WATER MACHINE ASSEMBLY, SCREW LOCK	
UNSPECIFIED TOLERANCES	MATERIAL	 CEDAR RAPIDS, IOWA	
1 PL ±.030	SCALE		
2 PL ±.010	DRAWN BY CHAD K.		
3 PL ±.003	DATE 12/18/2012		
ANGLE ±1.0°		PART NO. 8685-2FGW	REV. B


REV	NO.	DESCRIPTION	DATE	BY
THIS DOCUMENT SHALL NOT BE REPRODUCED NOR SHALL THE INFORMATION THEREIN BE USED BY OR DISCLOSED TO OTHERS EXCEPT AS AUTHORIZED BY J.E. ADAMS INDUSTRIES				

PART NO. 8659-110-2A-KIT

BILL OF MATERIALS			
ITEM	PART NUMBER	DESCRIPTION	QTY
1	5611D1	NUT, 8-32 UNC KEPP-ZINC PLATE	2
2	6024	ABUS DISKUS 26/70 LOCK	1
3	8659-110-2A	COVER ASSEMBLY, COIN BOX	1
4	8659-110-3	LOCK TAB	1

NOTE:
1) OPTIONAL LOCK AND COVER KIT FOR 8685 SERIES MACHINES



TITLE LOCK KIT-COVER, BRACKET, LOCK & NUTS		CEDAR RAPIDS, IOWA	
UNSPECIFIED TOLERANCES	MATERIAL		REV.
1 PL ±.030	SCALE		
2 PL ±.010	DRAWN BY CHAD K.		
3 PL ±.003	DATE 3/22/2012	PART NO. 8659-110-2A-KIT	
ANGLE ±1.0°			

REV	NO.	DESCRIPTION	DATE	BY
THIS DOCUMENT SHALL NOT BE REPRODUCED NOR SHALL THE INFORMATION THEREIN BE USED BY OR DISCLOSED TO OTHERS EXCEPT AS AUTHORIZED BY J.E. ADAMS INDUSTRIES				

